



# Point Of Sale Catalogue 2013



Office Telephone number;

01 4587470

Office Fax number;

01 4587472

E Mail

[sales@alliedpointofsale.ie](mailto:sales@alliedpointofsale.ie)

Web

[www.alliedpointofsale.ie](http://www.alliedpointofsale.ie)

September 2013

# Contents

Page 1	Merchandising Hooks With Pricing Arm
Page 2	Shelf Fronts (Ticket Rails)
Page 3	Shelf Fronts (Ticket Rails) & Shelf Risers
Page 4	Shelf Talkers
Page 5	Shelf Talkers
Page 6	Basket & Serve Over Price Card Holders
Page 7	Serve Over Price Card Holders
Page 8	Special Offer Display Bins - Frames & Accessories Sets
Page 9	Frame Hanging & Freezer Rail Sets
Page 10	Signage – Snap Frames & Pavement Signs
Page 11	Signage – Black Board Inserts & Accessories
Page 12	Profit Pusher – Always Front Facing
Page 13	Profit Pusher – Always Front Facing
Page 14	Category Signage
Page 15	Window Poster Display Systems
Page 16	Brochure Holders / Leaflet Holders
Page 17	Acrylic Menu Holders
Page 18	PVC Poster Pockets
Page 19	Shelf Management – Produce Fridges
Page 20	Shelf Management Metal Shelving (Tego)
Page 21	Bev-Trac Spring Loaded Shelf Lanes
Page 22	Signage Hanging Wires / Hooks / Clips & Q Management Belt Systems
Page 23	Shopping Baskets & Miscellaneous Products
Page 24	Q Management – Merchandising Options
Page 25	Q Management – Accessories
Page 26	Q Management – Magazine Shelves
Page 27	Pallet Surrounds – Floor Displays
Page 28	Hand Label Tools (Pricing Guns) & Labels

# Hooks With Pricing Arms

## Rear Support Bar (RSB)

**Description:** Rear Support Bar suitable for main floor Dry Grocery Shelving Systems. For use with RSB Hooks.

**Width Size:**

665 mm ( 7 mm Solid )

1000 mm ( 7 mm Solid )

1250 mm ( 7 mm Solid )

**Code:**

RSB BAR 665

RSB BAR 1000

RSB BAR 1250



## Rear Support Bar (RSB) Hooks

**Description:** Single Rear Support Bar hook with pricing arm 6 or 8 mm wire thickness lengths as below, back plate to suit 7 mm RSB Bar

**Size:**

200mm ( 6 mm wire )

300mm ( 8 mm wire )

**Code:**

RSBS - 200

RSBS - 300



**Description:** Double Rear Support Bar hook with pricing arm 5 mm wire thickness lengths as below, back plate to suit 7 mm RSB Bar

**Size:**

200mm ( 5 mm wire )

300mm ( 5 mm wire )

**Code:**

RSBD - 200

RSBD - 300



## Slat Wall Hooks

**Description:** Single Slat Wall hook with pricing arm 6 mm wire thickness lengths as below, back plate to suit Slat Wall

**Size:**

150 mm ( 6 mm wire )

200 mm ( 6 mm wire )

300 mm ( 6 mm wire )

**Code:**

SLATS - 150

SLATS - 200

SLATS - 300



**Description:** Double Slat Wall hook with pricing arm 5 mm wire thickness lengths as below, back plate to suit Slat Wall

**Size:**

200 mm ( 5 mm wire )

250 mm ( 5 mm wire )

300 mm ( 5 mm wire )

**Cost each**

**Code:**

SLATD - 200

SLATD - 250

SLATD - 300



## Price Tags



**Description:** Price Tag for Hooks with a pricing arm

**Size:** 39mm x 62mm ticket holder

**Code:** WMIP

**Description:** Price Tag for Double Peg hook

**Size:** 27mm x 32mm ticket holder

**Code:** 1000-5



## Shelf Fronts Main Floor Metal Shelving

**Description:** One position clip on data strip, for all main floor ambient shelving, dry grocery.

**Length:**

988mm

**CODE WTEF39-C-988**

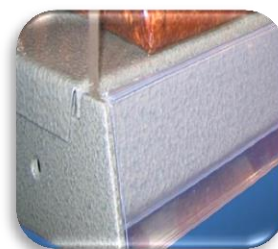
1238mm

**CODE WTEF39-C-1238**

**Colours:** Clear, Cream & Silver



Strip



## Shelf Edge Stick On Fronts

**Description:** Stick on data strip for fridges and other areas, possibly Fruit & Veg

**Length:**

990mm

**CODE WSF39-C-990**

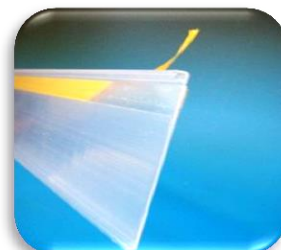
1240mm

**CODE WSF39-C-1240**

**Colour:** White ( W ) / Clear ( C )



Strip



## Shelf Fronts Fridges

**Description:** Data Strip with swinging hinge for fridges with oval bar front, use in Costan Fridges.

**Length:**

1240mm

**Colour:** Clear

**CODE WC-CLEAR-1240**



Strip

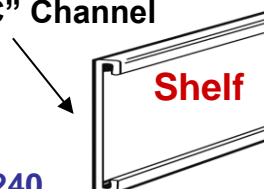


**Description:** Data Strip for fridges with "C" Channel receiver, use in Costan Fridges

**Length:**

1240mm

**Colour:** Clear & White **CODE WVF39-C-1240**



Shelf



**Description:** Two position clip on data strip for Linde Shelves, White replacement Clips are also available.

**Length:**

1240mm

**Colour:** Clear

**CODE WTF39-2-C-1240**



Strip



**Description:** Clip on data strip for Linde Refrigeration Shelves, White replacement Clips are also available as below.

**Length:**

1240mm

**Colour:** White

**CODE WT39-2-W-1240**



**Description:** Clip for shelf edges on Linde Fridges. Used to attach data strip to Linde Refrigeration shelves.

**Colour:** White

**CODE 9134691**



## Shelf Edge Fronts Freezer Door Wire Shelves



Description: Clip Over data strip for Freezer Door wire shelves, colour white and height 39mm

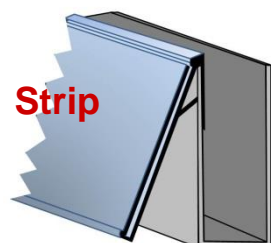
Length:  
750mm  
590mm

CODE WBEG39-750  
CODE WBEG39-590



## Shelf Fronts For U Shaped Front

**"U" Shelf Front**



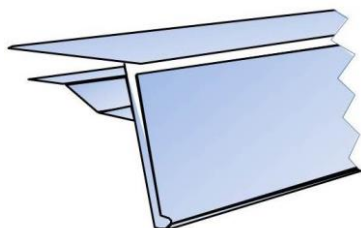
Description: Clip over data strip 39mm high for use on any shelf that has a an edge as shown in the drawing to the left.

Length:  
1240mm  
Colour: Clear

CODE WRF39-1240



## Shelf Fronts For Glass Shelves



Description: Clip over data strip for Glass Shelves with a thickness of 5mm to 10mm. For lebel height 39mm.

Length:  
1000mm  
Colour: Clear

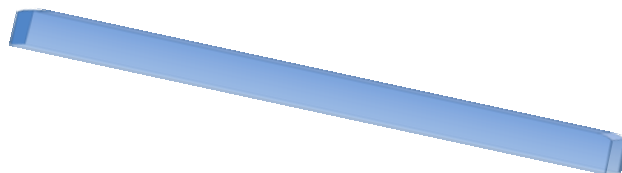
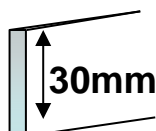
CODE: GLS 39 - 1000

## Shelf Risers Main Floor

Description: Biscuit Stop 30mm High (Shelf Riser) for Tego or Eden Shelving only Material Acrylic

Length:  
665mm  
987mm  
1237mm

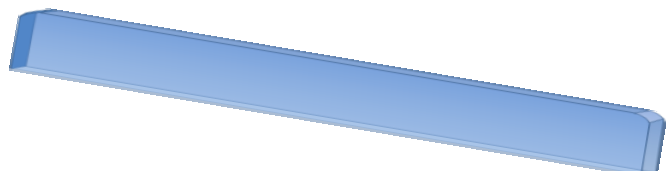
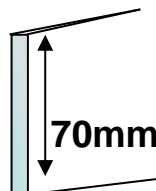
CODE:  
ACR 29  
ACR 31  
ACR 30



Description: Shelf Riser 70mm High (Shelf Riser) for Tego or Eden Shelving only Material Acrylic

Length:  
665mm  
987mm  
1237mm

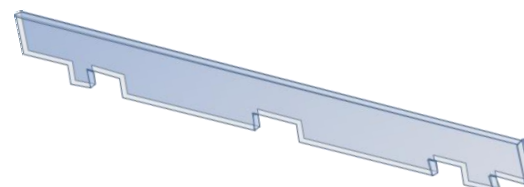
CODE:  
ACR 34  
ACR 32  
ACR 33



## Shelf Risers Refrigeration

Description: Refrigeration Shelf Riser 100mm High and 1250 Wide - Material Acrylic . SUITS ALL 3,4 & 5 PIN SHELVES

Size:  
80mm H by 1250mm W  
CODE ACR 44





## Shelf Talkers With Hinge

**Description:** Hinged Shelf Talker for use with inserts that are printed in store. They are for sheets that are from an A4 size down.

**Size:**

1/3 A4

1/6 A4

1/4 A4

**Code:**

WST 103 x 210 C

WST 77 x 153 C

WST 77 x 210



**Description:** Hinged Shelf Talker for special sized insert of 95mm high by 200mm wide.

**Size:**

95 by 200

**Code:**

WST 95 x 200

## Bus Stop Clip

**Description:** Bus Stop Clip Holder for holding shelf edge flag or BUS STOP. For Use in all areas of store.

**Code:** BSC60



## Portrait Shelf Talker - Main Floor

**Description:** Portrait Shelf Talker sleeve which slots into stainless steel clip with grip front (included). The clip attaches to shelf by clipping over the shelf front and Data strip holder as shown in photo to the right.

**Size:**

1/3 A4

**Code:**

PST212x100 MAIN



## Portrait Shelf Talker - Fridges

**Description:** Portrait Shelf Talker sleeve which slots into clip with grip front (included). The clip attaches to shelf by clipping over Data strip front where SEL is inserted.

**Size:**

1/3 A4

**Code:**

PST212x100 CHIL

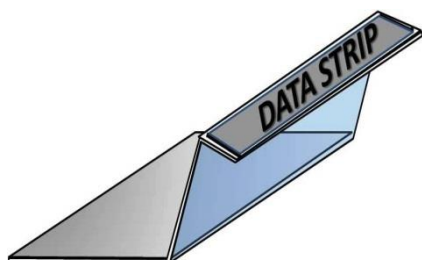


## Bakery Shelf Talker

**Description:** Angled Shelf Talker Holder for use under the wicker baskets on Bakery sections, unit drawing to the left - shelf talker needs to be ordered separately.

**Code:**

WST BAKERY





## New Freezer Shelf Talker Clip Over Freezer Dividers

**Description:** Shelf Talker which sits over freezer dividers to highlight special offers right at the Point Of Purchase. Base attachment works on wire and acrylic dividers.

**Size:**  
1/3 A4

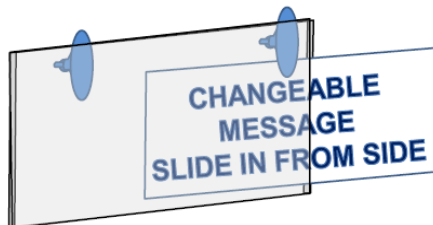
**Code:**  
ST103x210 FREEZ

## Shelf Talkers For Glass Chilled Doors

**Description:** Shelf Talker with suction cups for use with inserts that are DL size (1/3 A4) For use on glass.

**Size:**  
1/3 A4

**Code:**  
ST103x210 GLASS



## Shelf Talkers (Non Hinged)

**Description:** PVC Shelf Talker with no hinge. 39mm reveal at top for fitting into shelf data strip.

**Size:**  
1/3 A4

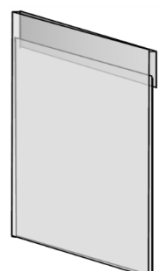
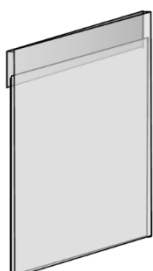
**Code:**  
DLST



**Description:** PVC Shelf Talker A4 Portrait for use in 39mm high Shelf Front Data Strip (No hinge)

**Size:**  
(A4) 297mm x 210mm

**Code:**  
STA4



# Pricing Clamps For Bread Baskets

**Description:** Swivel Clamp Holder with Grip attachment. For use in Bread area with clamps going over baskets. Top grip holds laminate card to accommodate pricing.

**Colour;** Transparent

**Code:**  
9217857



## Serve Over Pricing – Stainless Steel

**Description:** Deli Stand/ Price Card Holder Stainless Steel stand with clamp holder for laminate cards. Can also use adaptor for holding pricing cassette.

**Size:** 100mm - **Code:** 9138729

**Size:** 200mm - **Code:** 9138731



**Description:** Deli Spike SS / Price Card Holder Stainless Steel spike with clamp ring holder for laminate cards.

**Size:**

100mm

**Pack Quantity:**

20's

**Code:**

**SS DELI SPIKE**

**Colour;** Stainless Steel



**Description:** Stainless Steel ring top holder for price card with clamp ring holder for laminate cards.

**Size:** 100mm high

**Code:** SS DELI RING

**Description:** A4 Menu Holder for back of Fish Counter portrait message. To be used at the back of Fish Counters.

**Size:** A4 Sign Holder

**Code:** DELI A4 SS



## DELI COUNTER BLACK BOARD TICKET

**PVC Marker Black Board ticket for use in the serve over. Other sizes available on request. For use with chalk Marker Pens on page 33 in catalogue.**

**Size:**

60 x 70mm

**Code:**

8311 60x70





# Deli Pricing



**Description:** Deli Stand, Price Card Holder stand with clamp top holder for laminate cards. Both base and top holder swivel for use at different angles.

**Size:**

100mm

**Pack Quantity:**

**Code:**

17000-00/23910-00/23900-00

**Colour:** Transparent

**Description:** Deli Clip with Grip Top for laminate cards.

**Size:**

50mm

**Pack Quantity:**

10's

**Colour:** Transparent

**Code:**

P24000



**Description:** Deli Clip with Clamp Top

**Size:**

50mm

**Pack Quantity:**

10's

**Colour:** Transparent

**Code:**

P23001

**Description:** Deli Stand clear polycarbonate all one piece for use in conjunction with laminate card for pricing.

**Size:**

110mm High

80mm High

**Pack Quantity:**

20's

**Colour:** Transparent

**Code:**

DS - 110

DS - 80



**Description:** Deli Stand with ball joint for adjusting angle of card, clear polycarbonate all one piece for use in conjunction with laminate card for pricing.

**Size:**

30mm High

**Pack Quantity:**

20's

**Colour:** Transparent

**Code:**

C4-801

**Description:** Ice Spike, Price Card Holder spike with clamp top holder for laminate cards. Top holder swivel for use at different angles.

**Size:**

150mm breakable to 100mm

**Pack Quantity:**

10's

**Colour:** Transparent

**Code:** 28433 - 00



# Special Offer Wire Display Bin Sets

**Description;** Wire Display Basket which comes in two sizes and includes Spring Mounted Pole with Black or Clear A4 Frame & Insert. Polished zinc finish. Product has a collapsible base which can be moved upwards as the product is selling out. Ideal for mid floor, end of aisle or side displays.

**Standard Size** 420 Square x 770 High

**Code;** DUMP BIN SET

**Large Size** 600 Square x 770 High

**Code:** DUMP BIN SET L



## Frame & Accessory Sets

### A4 Frame, Pole, Insert & Plastic Base

**Description;** Self standing pole, frame, insert and plastic base. Black Pole height 300mm extends to 600mm. A4 Frame Clear or Black

**Code;** SET 01

**Chrome Pole** height 300mm extends to 600mm. A4 Frame Clear or Black

**Code;** SET 010

### A3 Frame, Pole, Insert & Plastic Base

**Description;** Self standing pole, frame, insert and plastic base.

**Size;** Pole 300 mm extends to 600 mm A3 Frame Clear or Black

**Code;** SET 05

### A4 Wine Topper, Frame & Insert

**Description:** Bottleneck Holder for off licence, goes over the top of the bottle and has a frame adaptor included. Inclusive of A4 Frame and Insert. Colours – Black or Clear.

**Code:** SET 08





## Frame, Insert & Magnet Base

Description; Frame, insert and magnet base White or Black Magnet  
Size; A4 Frame Clear or Black

Black magnet set – Code: SET 03

White magnet set – Code: SET 04



## Suspension Frame Sets

Description; Frame, insert & skyline track for hanging frames. 2m silver anodised profile complete with hanging wires, ceiling clips and 4 x A4 frames with inserts.

Code: 2 MTR SUSPENSION

Rail connector to create continuous run:

Code: 9178369



## Freezer Rail Sets

Description; Frame, insert & Freezer Track. The Track is a PVC profile 1250mm long, with a foam adhesive base for easy fitting. The placement of the track is shown in pictures to the right. For best effect the track can be used along a centre spine of a double sided coffin freezer. The set comes complete with three A4 frames with inserts and three frame clips which can be clipped on at any point along the track.

Code: SET 07

**NOTE; Can be very effective when used in conjunction with new Freezer Shelf Talker as shown bottom right.**



# Signage – Snap Frames & Pavement Signs



**Banner Snap - Headboard Holders.** Consists of Top Bar with two eyelets for hanging & Bottom Bar for base of sign. Both aluminium bars snap closed to grip sign. Included in set are two ceiling clips and spring hanging wires.

**CODE: 00.235 - PH**

**Description:** Wall mounted 25mm edge Snap Frame., Silver anodised finish with mitred corners.

**Size:**

**A1**

**A2**

**A3**

**A4**

**20 by 30**

**Code:**

**05.111-WR**

**05.112-WR**

**05.113-WR**

**05.114-WR**

**11.357**



**Description;** Wind Talker, with a moulded plastic base – which can be filled with water or sand to give extra weight to the stand. Rounded corners and also has wheels on one side to enable stand to be wheeled to location. Poster on both sides, Sizes A1 and AO.

**Code:**

**A1**

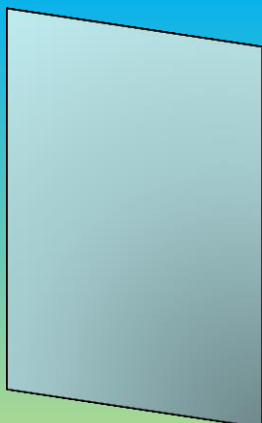
**WTA1**

**AO**

**WTAO**

**Description;** A frame, brushed aluminium finish, rounded corners takes poster on both sides. Size A1, other sizes available on request only.

**Code: 15.100**



**Description:** Replacement Covers for Snap Frame Signage Holders. Material is anti reflective and is available in the below sizes.

**Size:**

**AO 841mm by 1189mm**

**A1 594mm by 841mm**

**A2 420mm by 594mm**

**A3 297mm by 420**

**Code:**

**RC AO**

**RC A1**

**RC A2**

**RC A3**



# Signage Black Board Inserts & Accessories

## DELI COUNTER BLACK BOARD TICKET



**Description;** PVC Marker Black Board ticket for use in the serve over. Other sizes available on request. For use with below Marker Pens only.

**Size:** 60 x 70mm  
**Code:** 8311 60x70



**Description;** PVC Marker Black Board insert for wall mounted snap frames or standard frames. Other sizes available on request. For use with chalk Marker Pens below.

<b>Size:</b>	<b>Code:</b>
A1	8311971
A2	8311972
A3	8311973
A4	8311974



**Description;** Poster Pen marker for writing in widths of 2mm or 5mm on black boards or other non-absorbent surfaces like glass, plastic or metal. Pack of 5 white markers.

**Size:** 2 to 5mm  
**Code:** 8300238 (5 pack)



**Description;** Poster Pen marker for writing in widths of 10mm or 15mm on black boards or other non-absorbent surfaces like glass, plastic or metal. Pack of 5 white markers.

**Size:** 10 to 15mm  
**Code:** 8300248 (5 pack)



**Description;** Poster Pen marker for writing in widths of 2mm or 5mm & 10mm or 15mm on black boards or other non-absorbent surfaces like glass, plastic or metal. Pack of 5 coloured markers.

**Size:** 2 to 5mm  
10 to 15mm  
**Code:** 8300230(5 pack)  
8300240(5 pack)  
**One of each - red, green, blue, white & black**



**Description;** Poster Pen Cleaner – Transparent bottle with spray nozzle for ease of use when wiping poster pen from black boards

**Size:** 750ml  
**Code:** 8300220





# Profit Pusher GEN3 Spring Loaded Shelf Management

## CATEGORY

PUSH FEED

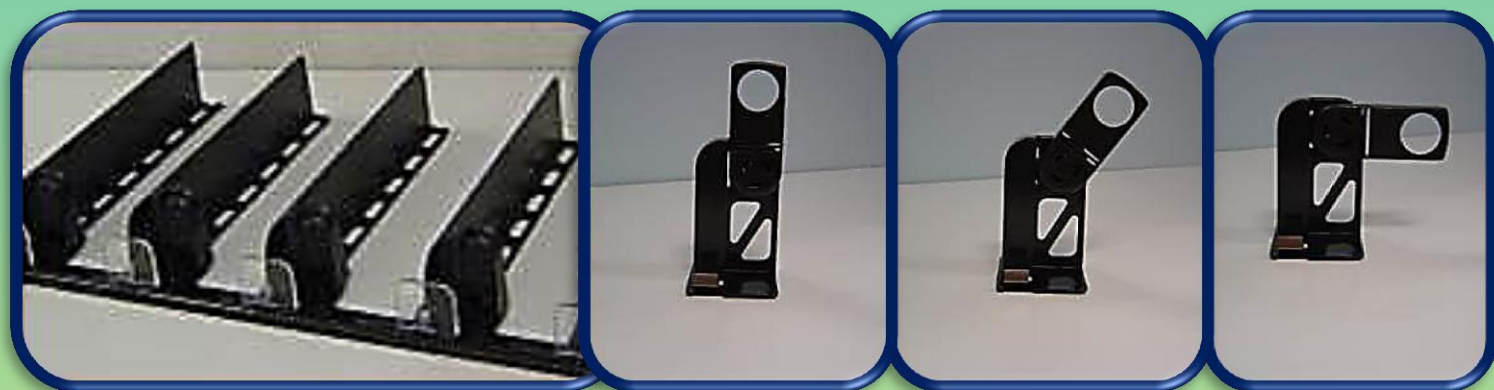
AUTOMATIC FACING

- MEDICINAL & VITAMINS
- DEODORANTS
- BABY FOODS
- HAIR COLOURS
- PERSONAL CARE
- MALE GROOMING
- SKIN CARE
- SPICES
- SAUCE JARS
- BATTERIES
- GARDENING PRODUCTS
- DIY

AND MANY  
MORE.....



- Promotes impulse purchase
- Improves Stock Management
- Reduces Labour Costs
- Always Front Facing
- Improves visibility of range for your customer
- Easy to install or adjust plan

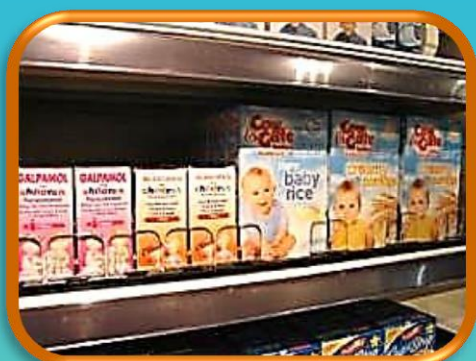


Adjustable plate on pusher to accommodate wide or tall products



**NEW**

# Profit Pusher GEN3 ALWAYS FRONT FACING



Shelf Size Depth X Width	Cost for 6 facings	Cost for 7 facings	Cost for 8 facings	Cost for 9 facings	Cost for 10 facings	Additional facings cost
370mm X1000mm	TBC	TBC	TBC	TBC	TBC	TBC
470mmX1000mm	TBC	TBC	TBC	TBC	TBC	TBC
570mmX1000mm	TBC	TBC	TBC	TBC	TBC	TBC
370mmX1250mm	TBC	TBC	TBC	TBC	TBC	TBC
470mmX1250mm	TBC	TBC	TBC	TBC	TBC	TBC
570mmX1250mm	TBC	TBC	TBC	TBC	TBC	TBC
300mmX1250mm	TBC	TBC	TBC	TBC	TBC	TBC
400mmX1250mm	TBC	TBC	TBC	TBC	TBC	TBC
500mmX1250mm	TBC	TBC	TBC	TBC	TBC	TBC



## Category Signage – Adjustable Shelf Clamp Solution For All Areas



**NEW**

**Description;** Category Signage Shelf Bracket Clamp. Bracket Clamp can take print of 5 to 6mm thick . The sign holder is hinged, so the Aisle Fin will re-centre when moved. The bracket fixes to the shelf by clamping onto the underside of the shelf bracket. The front of the bracket angle can be adjusted for use on angled shelves. Areas of use for this sign holder are where shelves might be wire, be at an angle, have a riser , larger than normal front (Wood Front) or have under-shelf lighting.

**Code:** METAL CAT CLAMP

## Category Signage – Shelf G Clamp

**Description;** Category Signage Clamp. G Clamp can take print of 5 to 6mm thick (recommended material Foam Board). The sign holder is hinged, so the Aisle Fin will re-centre when moved. This makes it the ideal category signage solution for store aisles.

**Code:** MET 01



## Category Head Board Arms

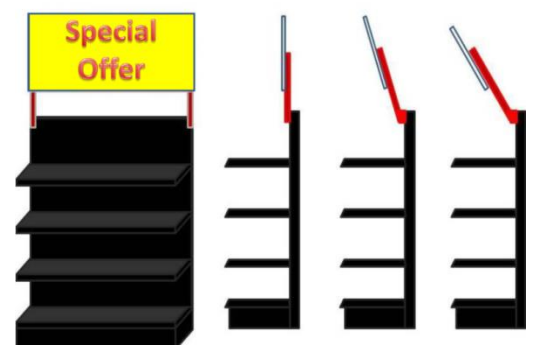
**Description:** Adjustable Category Headboard Brackets. Brackets take print which is fixed using 2 clear screws on each bracket (recommended material for sign is 5mm Foamex or 5mm Foam Board but other materials such as O80 board can also be used however the better effect is with one of the first two recommendations).

**Position 1:** Straight at right angle above the section, as in drawing to the right.

**Position 2:** 20 degree Tilt forward as in drawing to the right.

**Position 3:** 30 Degree Tilt forward as in drawing to the right.

**Code:** MET 10



## Magnetic Arm Chilled Produce

**Description;** Magnetic Aisle Sign Holder for under shelf on metal shelves. Recommended for use in refrigeration rather than main floor ambient shelving.

**Code:** MAG-ARM





# Window Cable Display Systems

**Description;** Window Cable display set consisting of the following;  
2 by 4m wire with top and bottom fixings, 4 by Cable Clips Large 6mm or 4 by Cable Clips Small 2mm and one by acrylic wallet with cover clip.

**Acrylic wallets mm**

**A3 297 x 420**

Extra wallet with clips included –

**A2 420 x 594**

Extra Wallet with clips included –

**A1 594 x 841**

Extra wallet with clips included –

**Code: CSET A3**

**C SET A3 X**

**Code: CSET A2**

**C SET A2 X**

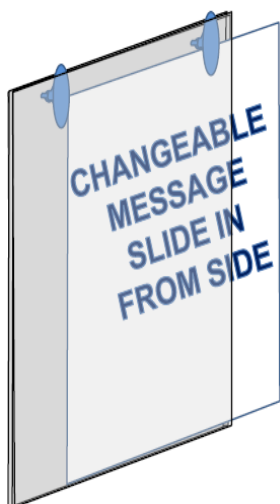
**Code: CSET A1**

**C SET A1 X**

**Fitting costs available on request.**



## Window Suction Cup Display Systems



**Description:** PVC WINDOW POSTER HOLDER WITH SUCTION CUPS on top for mounting onto glass for displaying posters either double or single sided messages. Material PVC – (SHATTER PROOF).

**Size:**

**A4 297mm by 210mm**

**A2 594mm by 420mm**

**A1 841mm by 594mm**

**20" by 30"**

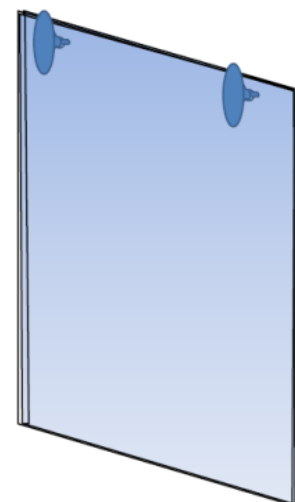
**Code:**

**PVC15**

**PVC16**

**PVC17**

**PVC18**

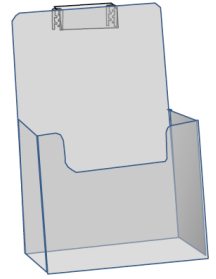


## Nutritional Leaflet Holder

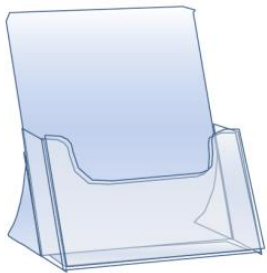


**Description:** Nutritional Leaflet Holder for Shelf Edge with grip for attaching to shelf fronts.

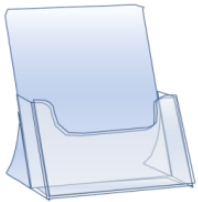
**Size:** Business Card **Code;** EX-24



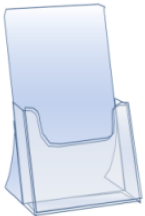
### Self Standing Brochure Holders



**Description:** A4 Self Standing Leaflet Box  
**Code:** EX - 1A



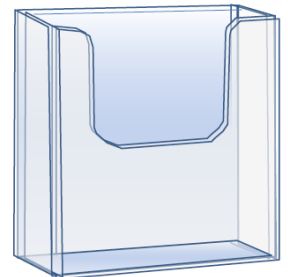
**Description:** A5 Self Standing Leaflet Box  
**Code:** EX - 2



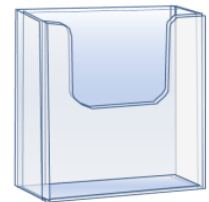
**Description:** 1/3 A4 Self Standing Leaflet Box  
**Code:** EX - 3

### Wall Mounted Brochure Holders

**Description:** A4 Wall Mounted Leaflet Box  
**Code:** EX - 10



**Description:** A5 Wall Mounted Leaflet Box  
**Code:** EX - 11



**Description:** 1/3 A4 Wall Mounted Leaflet Box  
**Code:** EX - 12

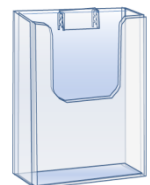


### Shelf Edge Brochure Holders



**Description:** 1/3 A4 Wall Mounted Leaflet Box with grip for attaching to shelf fronts.

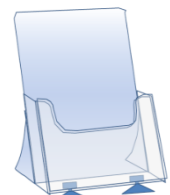
**Size:** DL **Code:** EX-25



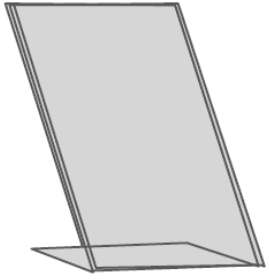
### Glass Counter Top Brochure Holders



**Description:** 1/3 A4 Stand Alone Leaflet Box with suckers for attaching to glass .  
**Size:** DL **Code:** EX-26

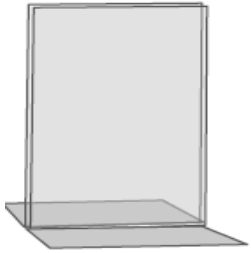
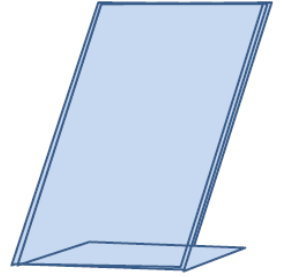


# Acrylic Menu Holders



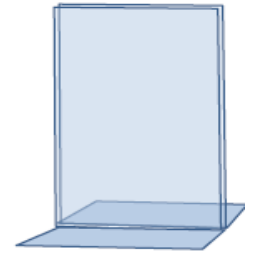
**Description: Self Standing Portrait Angled Menu Holder, Material Acrylic.**

**Size: A4      Code: ACR 14**



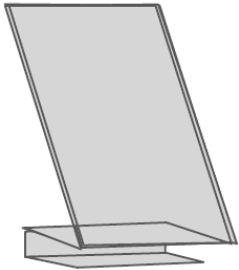
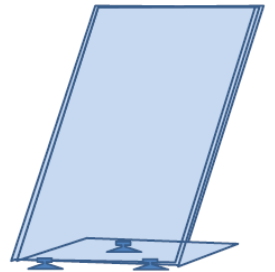
**Description; Portrait double sided menu holder. Self standing**

**Size; A5      Code: ACR2**



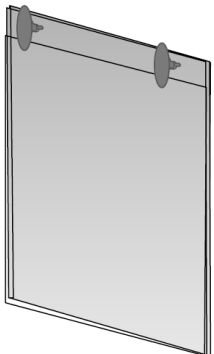
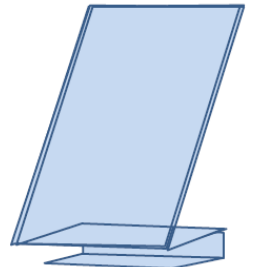
**Description: Portrait Angled Menu Holder With Sucker Pads on base. Material Acrylic.**

**Size: A4      Code: ACR 15**



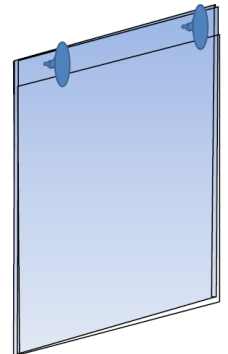
**Description: Portrait Angled Menu Holder With Clamp function on base. Material PETG**

**Size: A4      Code: ACR 13**



**Description: Portrait Menu Holder With Sucker Pads on top for mounting onto glass counter fronts for displaying Offers, or other information. Material PETG.**

**Size: A4      Code: ACR 35**



**Description; Portrait (P) or Landscape (LS) wall mounted menu holder. Material Acrylic.**

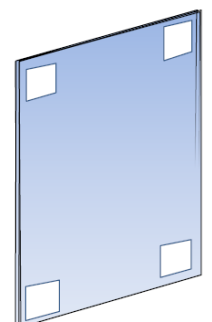
**Self adhesive pads on one side to fix to a wall type surface.**

**Size; A4**

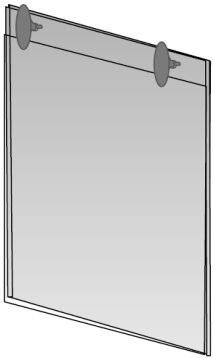
**LS**

**P**

**Code:(A4 P) ACR 23- (A4LS) ACR 26**

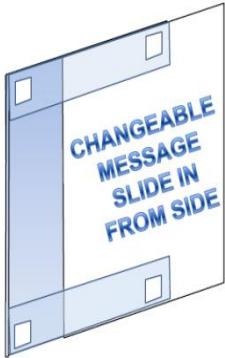
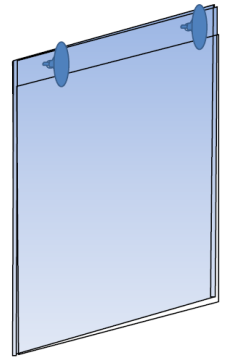


# Poster Holders



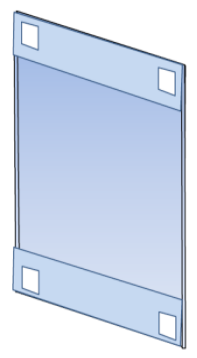
**Description:** Portrait Menu Holder With Sucker Pads on top for mounting onto glass counter fronts for displaying Offers, or other information. Material PETG.

**Size:** A4      **Code:** ACR 35



**Description;** A4 Portrait wall mounted PVC menu holder, with self adhesive pads on one side to fix to a flat type surface.

**Size:** A4      **Code;** PVC 10



**Description:** PVC POSTER HOLDER with eyelets for suspended or hanging displays, either double or single sided messages. Material PVC – (SHATTER PROOF). Use with hanging wires or cables.

**Size:**

**Code:**

A4 297mm by 210mm

PVC 33

A3 420mm by 297mm

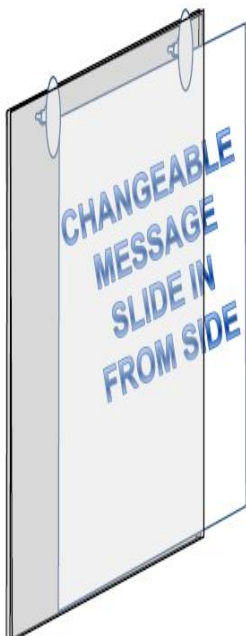
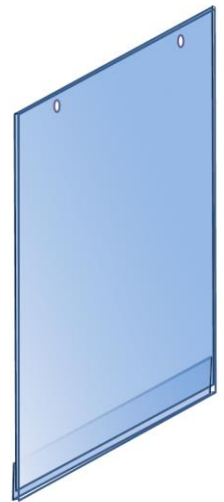
PVC 32

A2 594mm by 420mm

PVC 31

A1 841mm by 594mm

PVC 30



**Description:** PVC WINDOW POSTER HOLDER WITH SUCTION CUPS on top for mounting onto glass for displaying posters either double or single sided messages. Material PVC – (SHATTER PROOF).

**Size:**

**Code:**

A4 297mm by 210mm

PVC 15

A3 420mm by 297mm

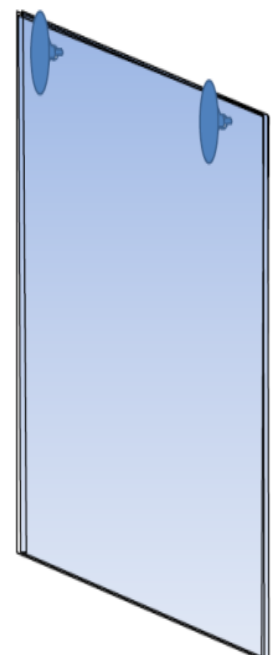
PVC 25

A2 594mm by 420mm

PVC 16

A1 841mm by 594mm

PVC 17





# Shelf Management Systems

## Produce Fridges

### Areas of use for full System;

- Pre-packed Cooked Meats
- Pre-packed Breakfast
- Ready Meals
- Bagged Salad
- Pre-packed Cheese

### Areas to use dividers only;

- Yoghurts
- Fats
- Spreads



Description: Support for Ladder **Code: SPIVIRUG**  
Size: 60mm x 120mm

Description: Ladder for Support **Code: SPIVITRAP**  
Size: Adjustable from 517mm To 150mm



Description: Breakable T Divider 120 mm high with "T" Front **Code: V125 - 485**  
Size: available to suit shelf depths 300 up to 500

Description: Magnetic Rail **Code: MAGNETIC T RAIL**  
Size : 1240 mm



# Ambient Shelf Management

## “U” Channel Divider

### AFFORDABLE STOCK CONTROL

The Divider comes in 3 lengths and clips straight into the channels of a Tego or Eden Shelving System. Dividers suits 370mm, 470mm and 570 mm shelving. Breakable divider available with front fixing only, breakable from 485mm to 260mm.

- **Manages stock levels**
- **Instant identification of off sales**
- **Facilitates re ordering stock**
- **Keeps shelf plan in place**
- **Easy to fit cost effective solution**

Code	Costs Per Divider
VT60.350	€ 0.82 each
VT60.450	€ 0.98 each
VT60.550	€ 1.24 each
VT60.485 9B	€ 1.09 each
T – Front	€ 0.20 each



Divide by facing (**above left**) or divide by variant (**above right**) for controlling shelf stock and maintaining shelf plan. Identify off sales quickly (**above left**)

### Suggested Product Categories

<b>Personal Care</b>	(Divide By Variant)	VARIANTS - PER SHELF 11
<b>Foods Of The World</b>	(Divide by Variant)	VARIANTS - PER SHELF 9
<b>Health Foods / Gluten Free</b>	(Divide By Variant)	VARIANTS - PER SHELF 10
<b>Whole Foods</b>	(Divide By Variant)	VARIANTS - PER SHELF 10
<b>Specialty Coffee</b>	(Divide By Variant)	VARIANTS - PER SHELF 8
<b>Specialty Teas</b>	(Divide By Variant)	VARIANTS - PER SHELF 8
<b>Cooks Ingredients</b>	(Divide by Variant )	VARIANTS - PER SHELF 8
<b>Cooking / Olive Oil</b>	(Divide By Variant)	VARIANTS - PER SHELF 9

# BevTrac – Spring Loaded Shelf Trays



**BevTrac** features a tray-to-tray connection allowing different sized packages to be merchandised together – maximizing shelf space.

Key Features	Benefits
Always front facing	➤ Enhances shop-ability and shelf presentation
Always on' pusher action	➤ Saves time and labour costs in facing and restocking
Four year front facing warranty	➤ Yields 2-4 times the lifespan of current (gravity) glides
Interlocking BevTrac lanes	➤ Allows full flexibility to mix and match any/all package sizes ➤ Gain incremental facings and accelerate new listings
Communication options	➤ Helps protect shelf space and communicate brand personalities

LANES PER CARTON - To Fit Product EG	CODE
72 (6 TRAYS by 12) – Spices Jars or Red Bull	860886001
60 (6 TRAYS by 10) – 330ml to 500ml soft drinks	860886002
66 (6 TRAYS by 11) – Glade, Mr Sheen, Yop Drinks	860886009
54 (6 TRAYS by 9) - Sauce Jars , Olive Oils	860886003
42 (6 TRAYS by 7) – Pickles, Sauce Jars	860886004
42 (6 TRAYS by 7) – Beers, Jars, Cordials & 1L Drinks	860886005
30 (6 TRAYS by 5) – 2L Drinks & Tins of Coffee	860886016
30 (6 SINGLES by 5) – 2L Drinks & Tins Of Coffee	860886006



# Permanent Hanging Sign Sets



**Description:** Wire Hanger Set 2m. Sign height can be adjusted closer to the ceiling by cutting the wire lengths to the required height. Holds panel size of up to 6mm thick.

**Size:** 2M

**Finish:** Satin Chrome

**Code:** 9534111



## Ceiling Hanging Wires

**Description:** Solid ceiling hook for suspending POS signs.

**Size:**

65mm S Hook

150mm

300mm

500mm

750mm

**Code:**

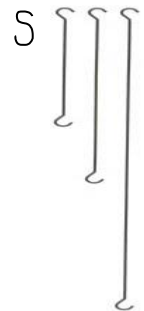
1617

8350 329

8350 330

8350 331

8350 332



## Ceiling Clips

**Description:** Clip on ceiling clip

**Code:** 7103



**Description:** Stick on ceiling clip

**Code:** 2279



## Q Management System



**Description;** Q Management Pole. Chrome queue barrier post, available with a retractable 2000 mm red or black belt. Height including base 900 mm, base diameter 300 mm. Minimum of 2 poles needed for set.

**Code:** Q POLE

**Description;** Q Management A4 signage for above pole only. Metal A4 portrait frame with acrylic A4 insert and screw fixing on base. This frame set screws into the top of above pole when small cover is clipped out of the centre of the above pole and belt set.

**Code:** QM A4





# Baskets & Miscellaneous Products

**Description;** 30L capacity, 4 riveted wheels (2 fully swivel) 2 handles. Colours in stock, red or black. Other colours available by request only.

**Quantity;** 10 per box.  
**Code:** WB30L - Colour



**Description;** 19ltr Wire Basket with polished zinc finish. Various handle colours available including Red, Green, Black. **Quantity;** 20 per box.  
**Code** 19L - Colour



**Description;** Mobile Basket Stacker, Available in polished zinc finish and also in matt black finish to suit the plastic baskets.

**Code:** 3264



**Description;** 25ltr Plastic Basket with single black handle. Various colours available including Red, Turquoise, Blue, Green, Black. **Quantity;** 22 per box.  
**Code:** 3261 - Colour

**Description;** Fruit & Veg Bag Holder – Used for holding bag rolls in the Fruit & Veg area on angled displays  
**Cost;** €27.50 each

**Code:** BAG HOLDER



**Description;** Kick Stool – with collapsible wheels for stability when in use. Height 430mm, Top Diameter 300mm, Bottom Diameter 450mm. Colour; Grey  
**Code:** KICKSTOOL

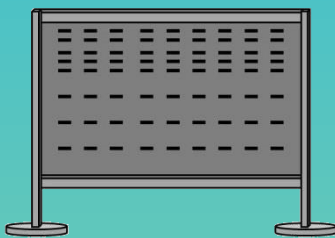
**Description;** Polycarbonate Convex Security Mirror. Acts as a deterrent to theft providing a view to parts of stores not in direct line of sight. Recommended for use in smaller stores. Diameter 450mm

**Code:** 3100436



**Detector Pen** – Very simple to work, just mark the bill to be checked in a brightly coloured place, when the line immediately changes into a dark colour, the bill is forged. No ink residue left on genuine notes. Up to 6,000 tests with one pen.  
**PLEASE NOTE** counterfeiters can already copy note paper.  
**Code:** DETECTPEN

# Q MANAGEMENT SYSTEM

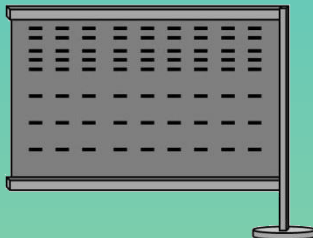


## Q MANAGEMENT STARTER SECTION

The first bay in a run which includes 2 by 1200mm uprights with 2 by 350 diameter solid steel bases, 2 by 1180mm Crossbars and 1 by double sided slotted back panel.

Code: QM-START

Cost: €380.00



## Q MANAGEMENT ADD ON SECTION

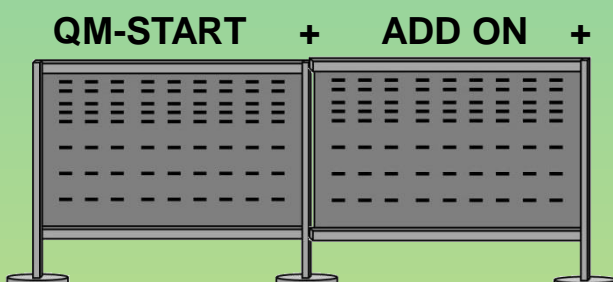
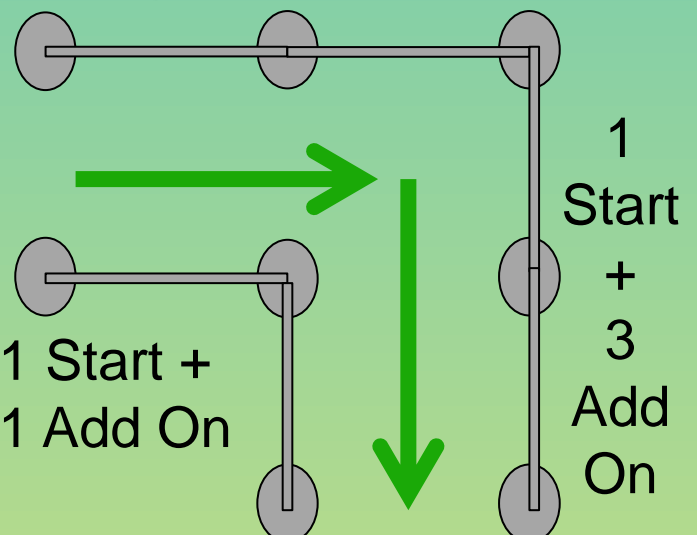
The add on bays in a run which includes 1 by 1200mm upright with 1 by 350 diameter solid steel bases, 2 by 1180mm Crossbars and 1 by double sided slotted back panel.

Code: QM-ADDON

Cost: €324.00

Once a run has been **started** you can just keep **adding on** in straight lines (below left) or 90 degree turns (right) until the run is ended. When starting again the first bay will be the start bay.

## OVER VIEW





# Q MANAGEMENT SYSTEM ACCESSORIES



**Metal A4 Signage** for top of uprights, with A4 Acrylic Wallet holding changeable message.  
**Code: QM A4**



**Magazine Hot Spot** for uprights, can be used on the lead in or on uprights between bays.  
**Code: QM MAG**



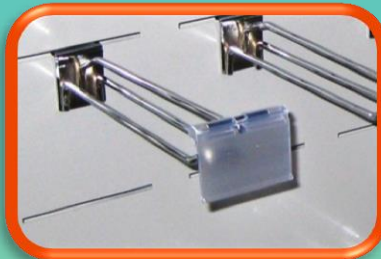
**Shelf** fitting the full width of the bay as shown, complete with 40mm high Data Strip for pricing.  
**Code: QM SH LG**



**Shelf** fitting half the width of the bay as shown, complete with 40mm high Data Strip for pricing.  
**Code: QM SH SM**



**Merchandising Bowls** for top of uprights 300 mm Diameter  
**Code: QM MB**



**Price Tag** for Hooks with a pricing arm 39mm x 62mm ticket Holder  
**Code: WMIP**



**Merchandising Hooks** Double Prong 150mm With Pricing Arm  
**Code:SLATD-150**



**Merchandising Hooks** Double Prong 200mm With Pricing Arm  
**Code:SLATD-200**



**Merchandising Hooks** Single Prong 150mm With Pricing Arm  
**Code:SLATS-150**



**Merchandising Hooks** Single Prong 200mm With Pricing Arm  
**Code:SLATS-200**

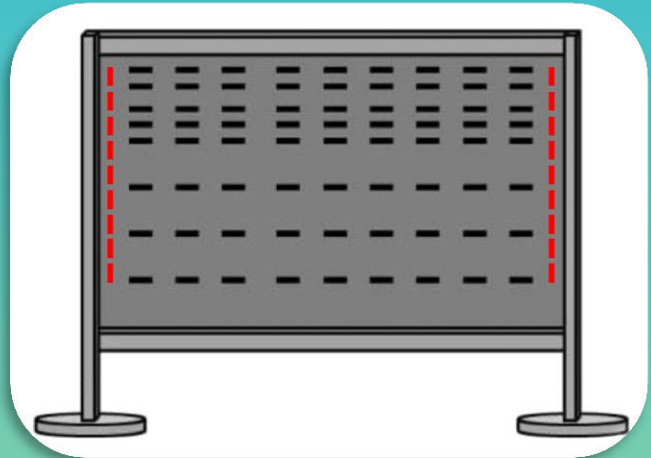


# Q MANAGEMENT SYSTEM MAGAZINE ACCESSORIES



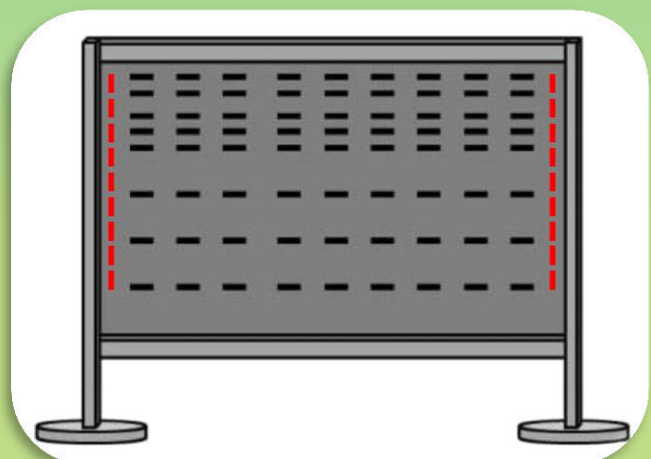
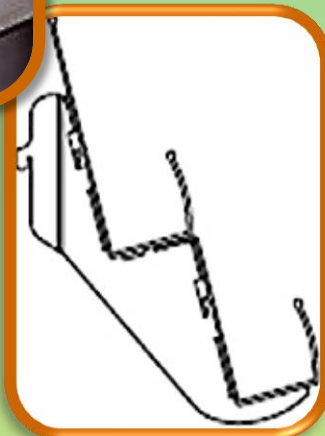
**Magazine Single rack set** including brackets compatible with Solid 3mm back panel on Q Management System. Brackets clip onto the back panel via the vertical slots in the panel **(indicated in red below)**

CODES	Width
MTS101-1200	1200mm



**Magazine Double rack set** including brackets compatible with Solid 3mm back panel on Q Management System. Brackets clip onto the back panel via the vertical slots in the panel **(indicated in red below)**

CODE:	Width
MTS201-1200	1200mm

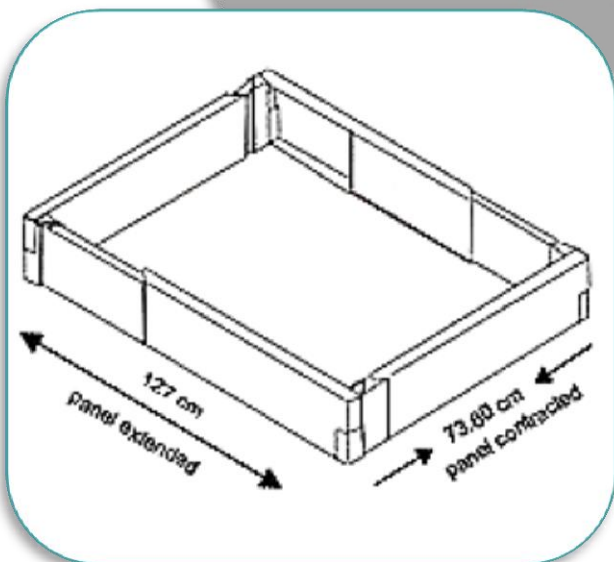


# Adjustable Pallet Guards

The portable, instant and flexible display of the 7 inch Adjustable Pallet Guard makes it easy for you to place your products in an attractive way (e.g. T-shape) through a store. Easy to move and to set up, the 7 inch Adjustable Pallet Guard can be placed in various places throughout the store. This unit is designed to accommodate longer runs, European size pallets and merchandising shippers. This low profile unit (17.80 cm height) is also designed to protect shoppers from exposed pallets while not covering up merchandise.

**Price is not inclusive of prints**

**Code: PG – 07**



## Pallet Guard Prints

### **SPECIAL OFFER**

Prints are available in sets of 4 (one to each side of Guard) and will be fixed to Pallet Guards when ordered with same.

**Costs by request.**



## TOVEL

ENTRY®



1 and 2 printing lines with 6 to 20 printing digits, suitable for 22×12 and 22×16 wavy edge labels for price marking.

Tovel Entry meets the demand of low volume in-store labeling.

Model	Description	digits per line	Label size	CODE
1 line	8 printing digits	8	26 x 12	<b>9298517</b>
2 line	18 printing digits	8-10	26 x 16	<b>9298518</b>



### Ink Roll Replacements TOVEL Entry

5 ink rolls p. Blister pack suitable for minimum 1 box of labels. Colour: Black

**CODE: 9294071**



### Price Labels

N.B. No security cuts	These labels have butt cuts and will run through ALL Meto and Tovel Label Guns which accept a 26mm x 12mm label.	
26 x 12 labels	Plain Label Code	Cost by request
26 x 12 White Permanent	<b>9193883</b>	
26 x 12 White Removable	<b>9199600</b>	
26 x 12 Yellow Permanent	<b>9298923</b>	
26 x 12 Yellow Removable	<b>9298906</b>	
26 x 16 labels	Plain Label Code	Cost by request
26 x 16 White Permanent	<b>9197072</b>	
26 x 16 White Removable	<b>9195691</b>	
26 x 16 Yellow Permanent	<b>9298957</b>	
26 x 16 Yellow Removable	<b>9298958</b>	

26x12 mm

26x16 mm



# Order Form

**Please photocopy for writing and  
faxing order**

[illegible]

**Fax to 01 – 4587472**

Store Number                      Contact Name

Delivery Address \_\_\_\_\_

---